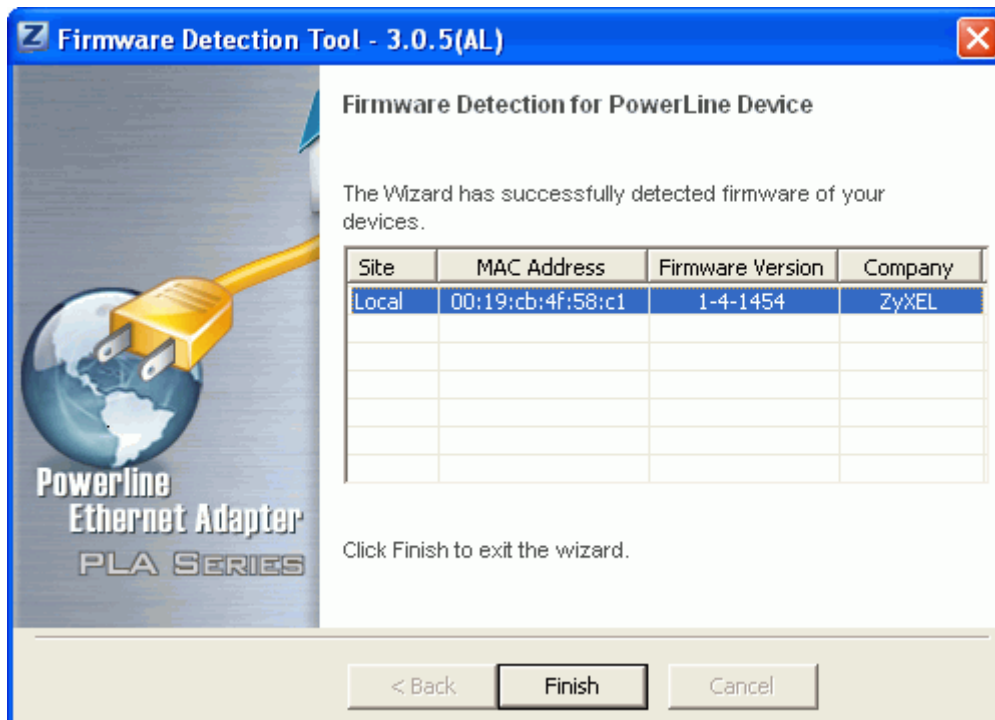
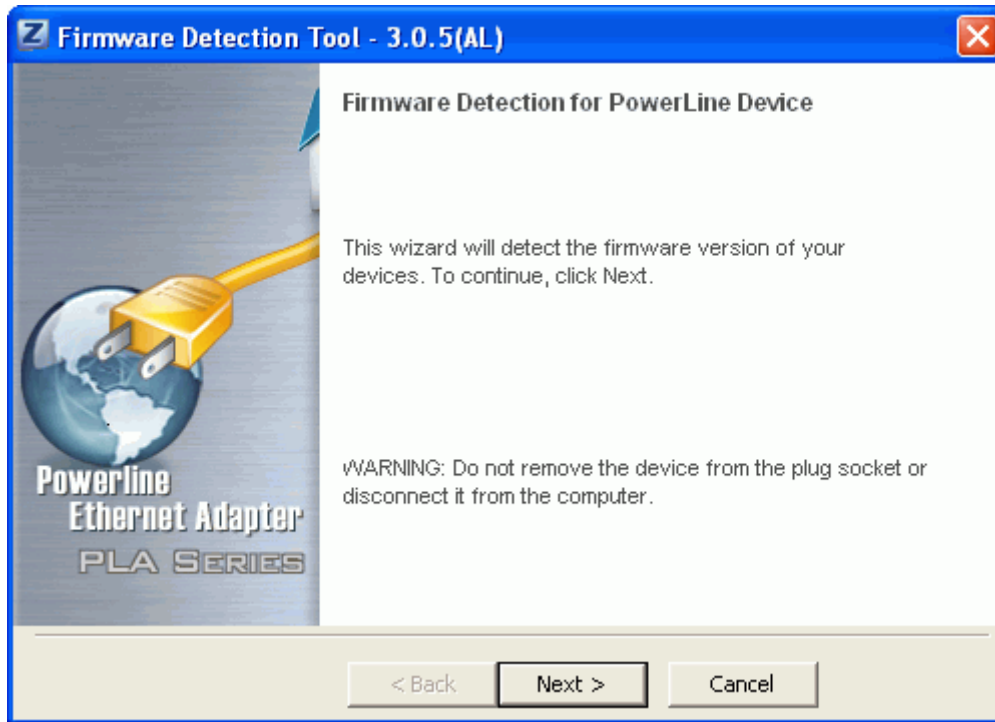
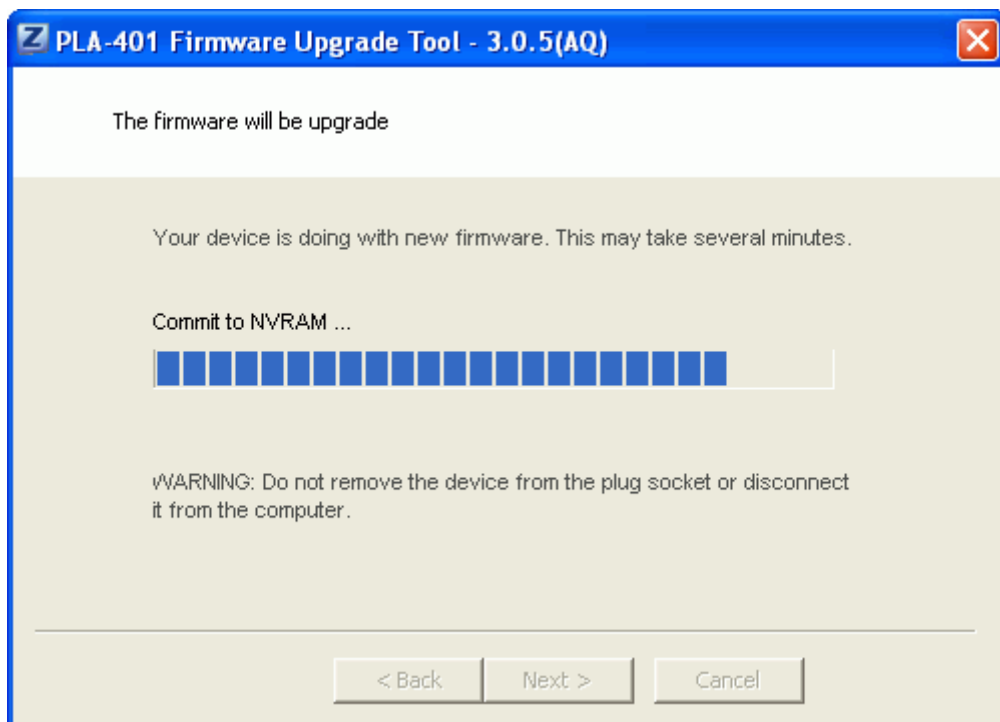
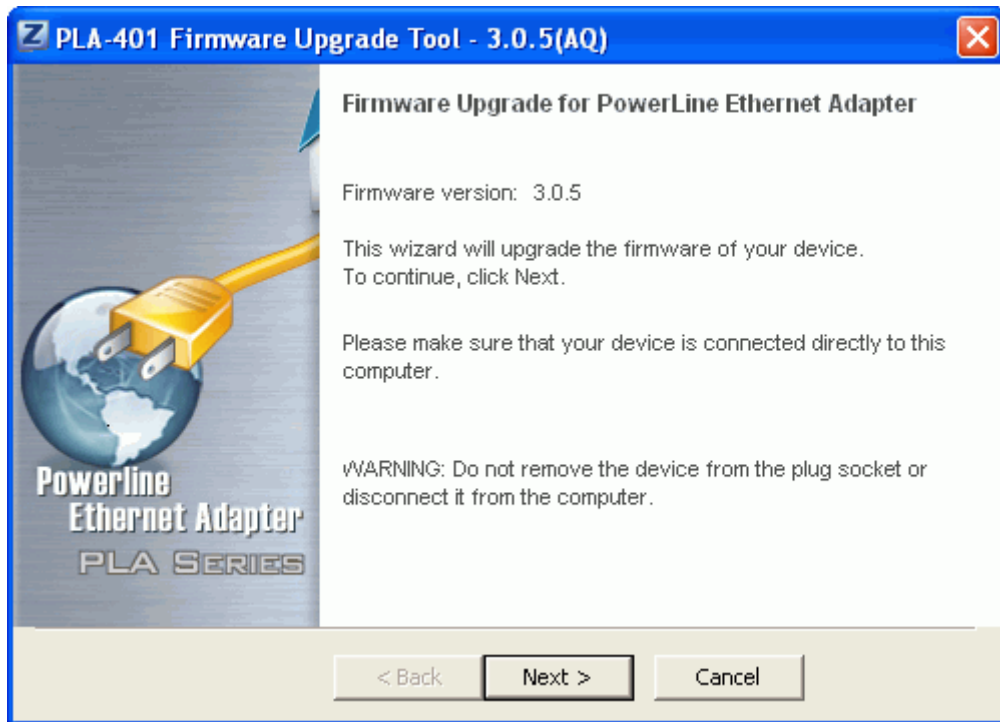


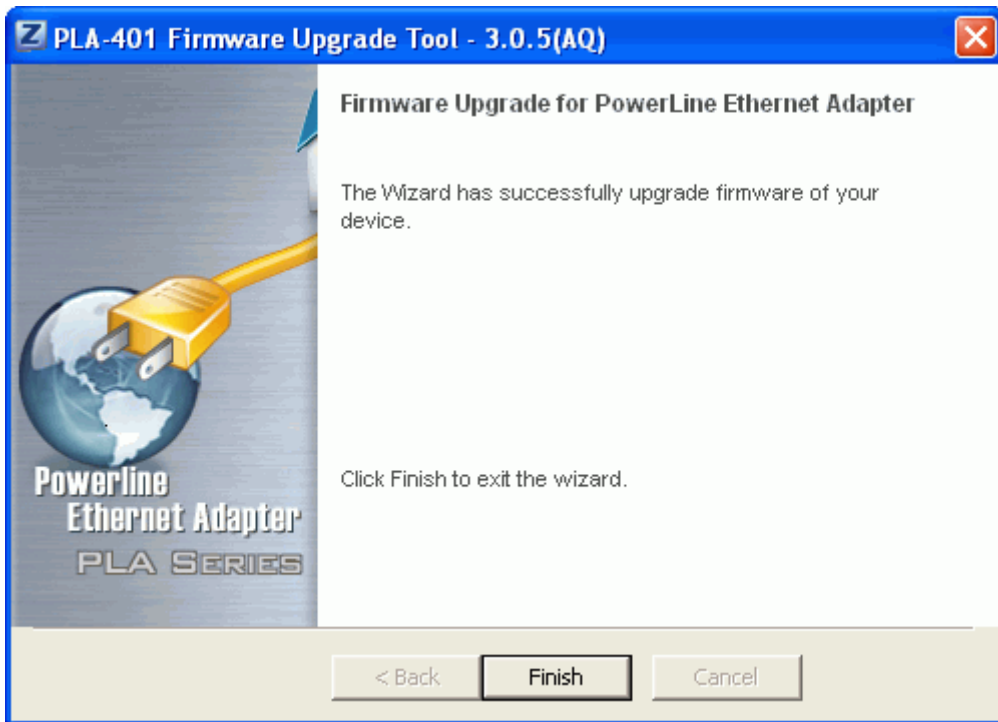
## Standard Upgrade Procedure:

**STEP 1:** Detect the current firmware in the PLA device by double clicking "PLA-4xFWDetection.exe" which you can find it in "DetectionTool" folder.

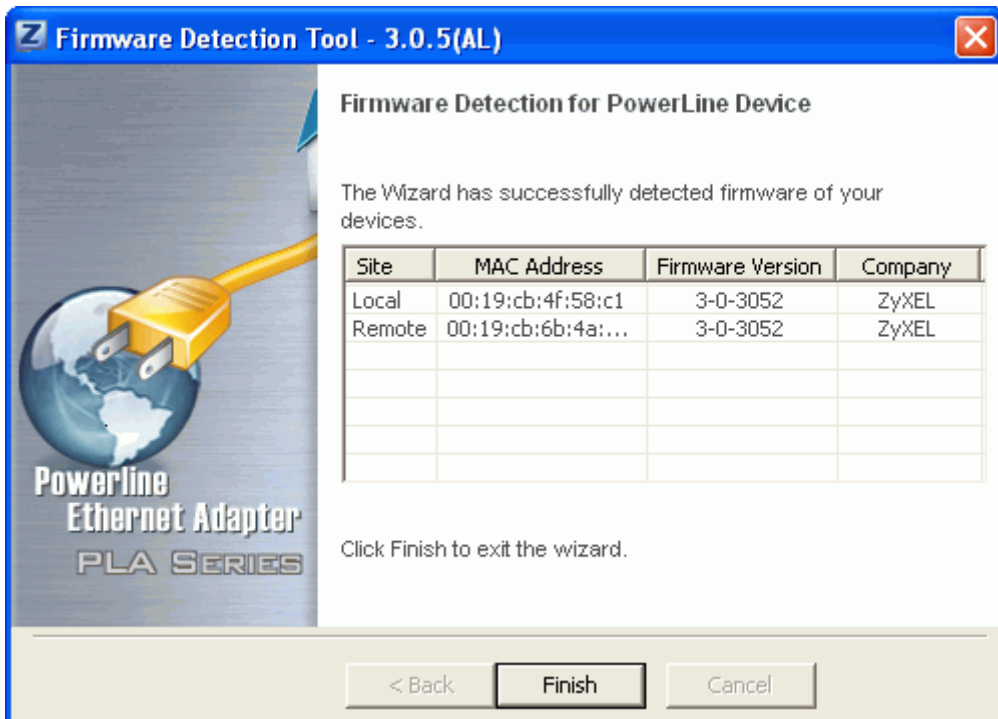


**STEP 2:** Upgrade new firmware Double click "PLA-401FWUpgrade.exe" which you can find it in "FirmwareUpgradeTool" folder.



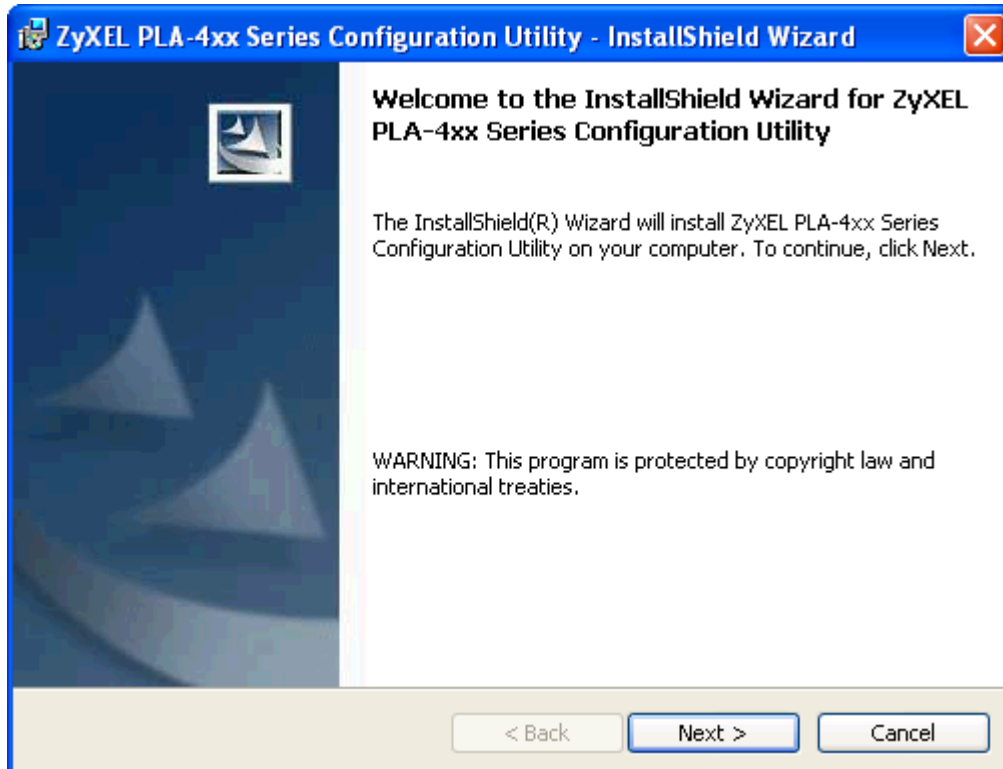


**STEP 3:** In order to confirm you have correctly upgrade the firmware over the PLA, double clicking the "PLA-4xxFWDetection.exe" which you can find it in "DetectionTool" folder.

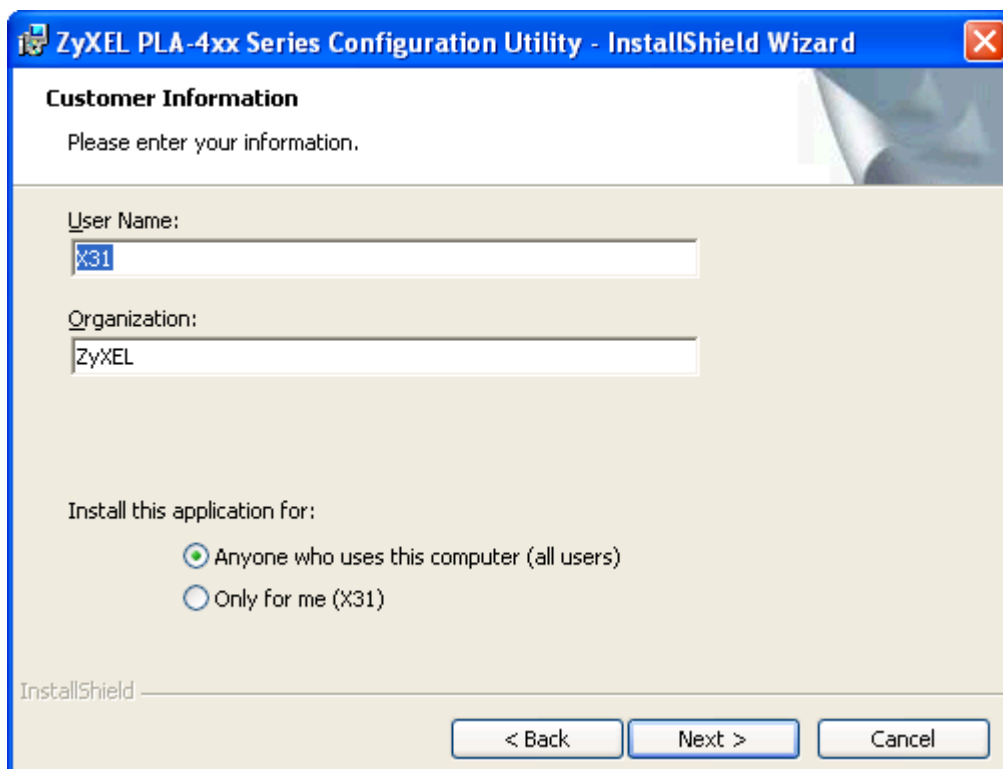


**STEP 4:** In order to install Utility, double click the “setup.exe” in Utility folder and follow the steps to install your utility.

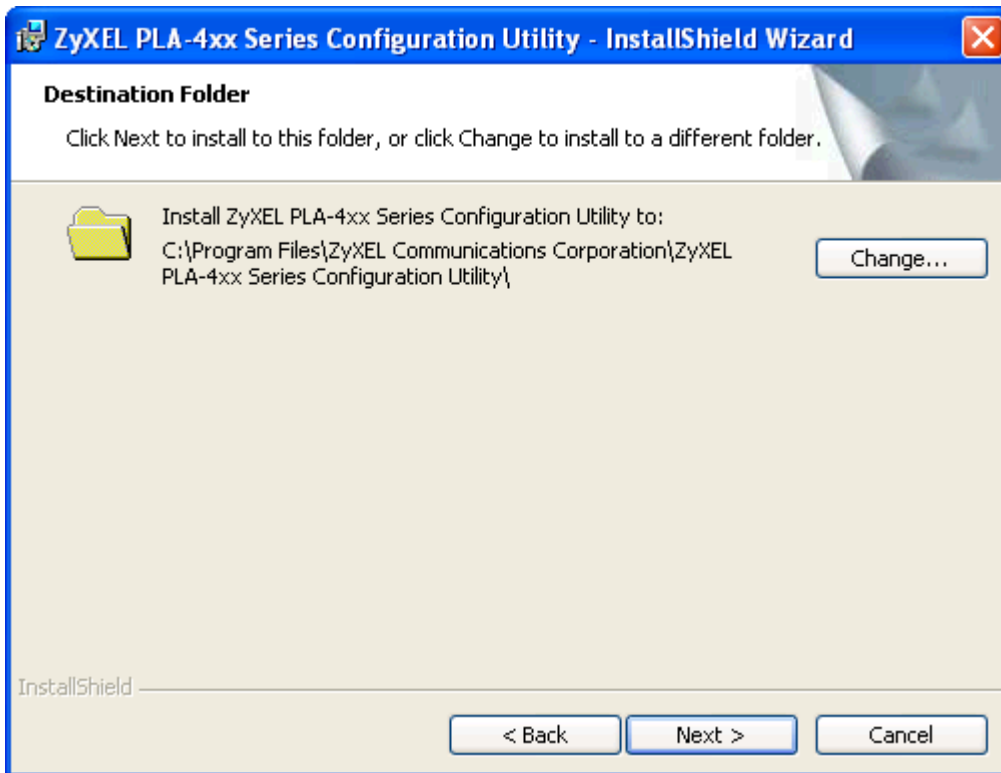
Click on “Next” to forward to user information page.



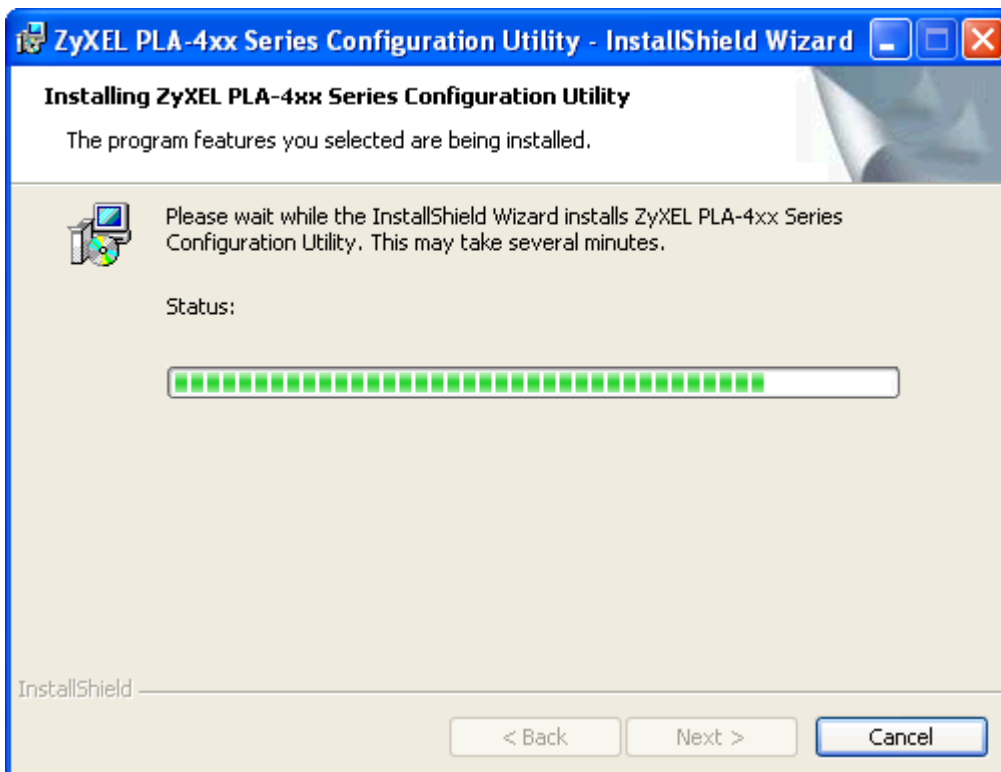
Fill in the User Name and Organization and click “Next”.



Click on "Next" if you don't want to change the installation path.



Please wait until the complete message come up.



Click "Finish" in order to complete the utility installation process.

